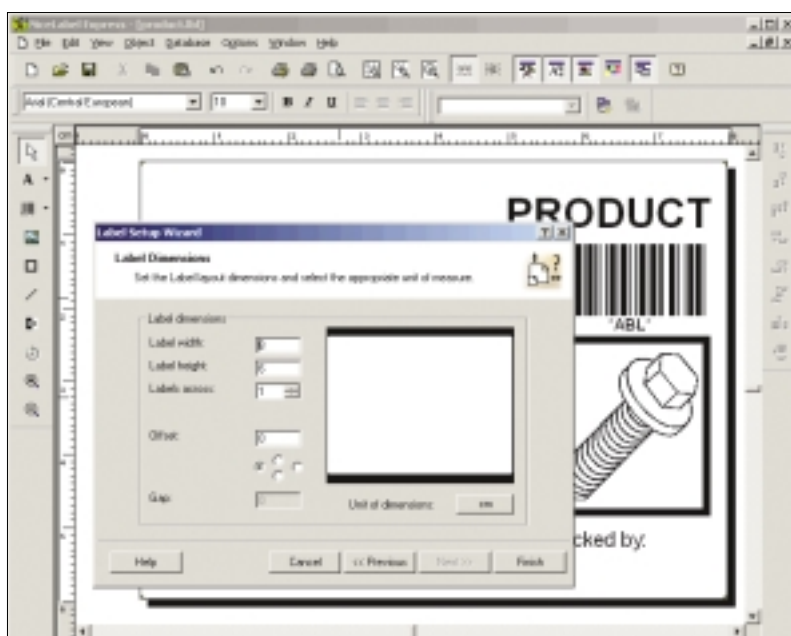


NiceLabel Express - fast, simple, efficient

051790



NiceLabel Express is the basic software for all labels which use standard barcodes. This entry-level version offers users a wide range of design elements from the professional version of NiceLabel, but is fully wizard based, making it even simpler to use.

Right from the start, the menu system makes working with NiceLabel child's play.

The perfect combination: High-performance and ease of use

Is there a labeling software package which is at the cutting edge of technology and is still easy to use? Which handles all important labeling tasks inexpensively and efficiently?

The answer is yes. NiceLabel Express combines the performance of its big brothers with a hugely simplified user interface to meet just this challenge.

Label design in no time

NiceLabel Express is based on user-friendly wizards and its perfectly thought out shortcuts really help make label design fast and simple. The software includes all the basic tools for

label design and supports input fields, date and timestamps and all standard barcodes including 2-D, UCC and EAN 128.

Interaction with the database

The database wizard in NiceLabel Express also handles data from external sources and reads in information from ASCII text files, for instance, rapidly and reliably.

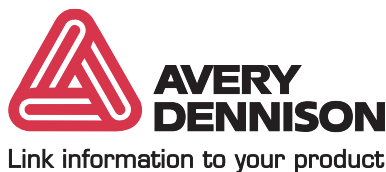
This means that NiceLabel Express is open for communication with other software systems, facilitating successful product labeling and identification.

NiceLabel Express - at a glance

Supported barcodes and 2D symbologies:	EAN 13, EAN 14, EAN 8, UPC-A, UPC-E, EAN/UPC barcodes with add-ons, interleaved 2 of 5, Code 39 (normal, full ASCII, Tri-Optic), Code 93, Code128 (A, B, C), Postnet (32, 37, 52, 62), Codabar, Bookland, MSI, Pharmacode, RSS (linear and composite), SSCC, UCC.EAN 128, ITF 14, ITF 16, Kix, PDF-417, DataMatrix, MaxiCode, Aztec, QR, Codablock F, 2D Pharmacode, MicroPDF
External data sources:	Text (ASCII) documents
Printers:	All printers with Windows drivers, on-site thermal printer support using high-performance NiceDrivers: Argox, Avery Dennison, Blazeprint, CAB, Century, Citizen, Cognitive, Compuprint, Comtec, Datamax, Eltron, EPC, Etimark, Exttech, Facit, Genicom, GOD BM, IBM, ILS, Imaje, Intermec, Italora, Lapis, Markem, Markpoint, Meto, MPH, Novexx, Printronix, QLS, Ring, Sartorius, SATO, TEC, Tharo, TSC, UBI, Unimark, Zebra etc.
Graphics formats:	BMP, CUR, DIB, EMF, FAX, G3F, G3N, GIF, ICB, ICO, J2K, JP2, JPC, JPE, JPEG, JPG, PCX, PNG, PXM, RLE, TARGA, TGA, TIF, TIFF, VDA, VST, WMF
Program languages:	Chinese (simplified), Chinese (traditional), Croatian, Danish, Dutch, English, Finnish, French, German, Hebrew, Hungarian, Italian, Japanese, Lithuanian, Polish, Russian, Slovakian, Slovenian, Spanish, Swedish, Thai, Ukrainian
System requirements:	Pentium-based computer with at least 15 - 40 MB RAM, 32-bit Windows operating system [9x, Me, NT, 2000, XP, 2003], 15 through 90 MB free hard disk space [depending on the version used and the options selected]

Specifications are subject to change without prior notice (03/2004)

The name Avery Dennison is associated worldwide with perfect labeling. In addition to software, we also offer hardware, consumables and service.



JALO coding & labeling bv



Van Oldenbarneveldtstraat 114
6827 AN Arnhem, Nederland
Tel. 0031 (0)26 - 3634274
Fax. 0031 (0)26 - 3634319
email: sales@jalo.nl
website: www.jalo.nl